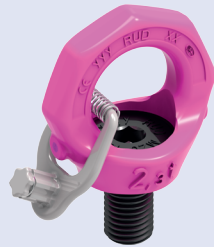


LIFTING

Lifting points – ready for bolting



VRS "STARPOINT"
Vario eye bolt "STARPOINT"

Thread sizes
M6 – M48
1/4" – 2"

further thread types
and special lengths
on request.

see p.84

											type		
0.1t	0.3t	0.4t	0.75t	1.5t	2.3t	3.2t	4.5t	7t	9t	12t	thread size		
M6	M8	M10	M12 M14	M16 M18	M20 M22	M24 M27	M30 M33	M36	M42	M48	β	number of legs	
1/4"	5/16"	3/8"	1/2"	5/8"	3/4"	1" – 1 1/8"	1 1/4"	1 1/2"	1 3/4"	2"			
0.5	1	1	2	4	6	8	12	16	24	32	0°	1	
1	2	2	4	8	12	16	24	32	48	64	0°	2	
0.1	0.3	0.4	0.75	1.5	2.3	3.2	4.5	7	9	12	90°	1	
0.2	0.6	0.8	1.5	3	4.6	6.4	9	14	18	24	90°	2	
0.14	0.42	0.56	1	2.1	3.22	4.48	6.3	9.8	12.6	16.8	0-45°	2	
0.1	0.3	0.4	0.75	1.5	2.3	3.2	4.5	7	9	12	45-60°	2	
0.1	0.3	0.4	0.75	1.5	2.3	3.2	4.5	7	9	12	unsym- metrical	2	
0.21	0.63	0.84	1.6	3.15	4.83	6.7	9.4	14.7	18.9	25.2	0-45°	3+4	
0.15	0.45	0.6	1.12	2.25	3.45	4.8	6.7	10.5	13.5	18	45-60°	3+4	
0.1	0.3	0.4	0.75	1.5	2.3	3.2	4.5	7	9	12	unsym- metrical	3+4	

Higher WLL due to optimized attachment
or usage (see product page).